



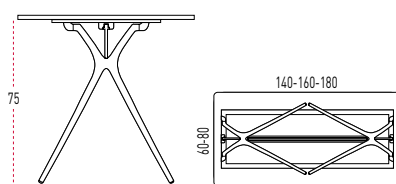


- ① Steel frame 40 x 15 mm and 2 mm thickness
- ② 19 mm board with anti-shock soft edge rectangular edge 2 mm thickness and anti-shock soft edge 3 mm thickness
- ③ Extruded aluminium runner with polypropylene (PP) bracket
- ④ Moulded aluminium legs 21 mm
- ⑤ Black polypropylene (P.P) caps

TROLLEY FOR STACKING



SIZES



TOP FINISHES

MFC (19 mm)



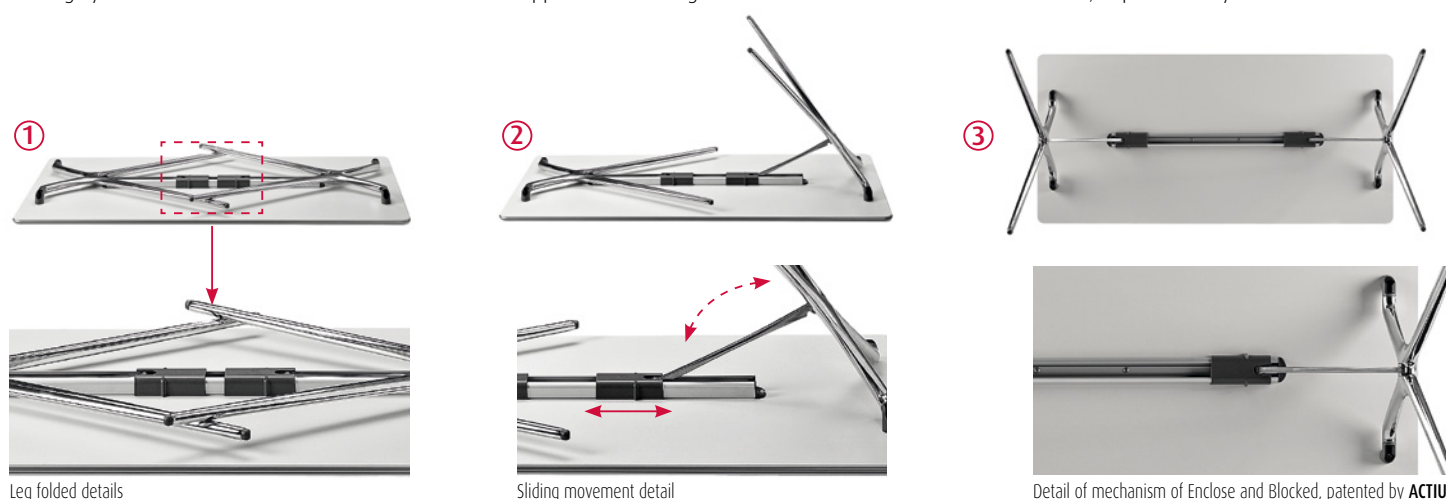
FRAME



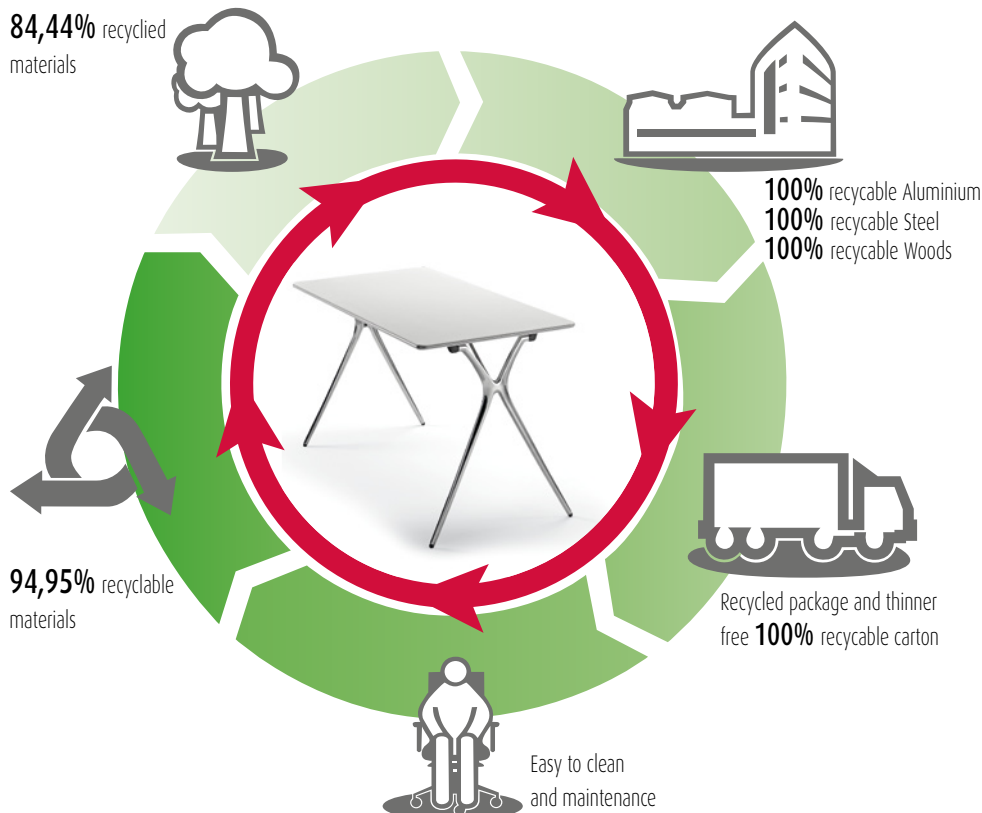
Finishes: black, white, silver and polished

FOLDING SYSTEM

Folding system has an articulated movement with the support of an sliding beam. Mechanism of Enclose and Blocked, is patented by **ACTIU**.



84,44% recycled materials



MATERIALS

PLEK has been designed to be manufactured with recycled materials 84,44%, danger substances such as chrome, mercury or cadmium are not used in big quantity. Recyclables Aluminium, Steel and Woods 100%. Organic volatile Components. Packages manufactured with recycled carton. Ink thinner free.



PRODUCTION

Energy use is optimized during the production process. Minimum environmental impact. Last generation technological system in coating processes. Painting that have not been used is recovered to use it again. Zero COVs emissions and other contaminant gas. Close water circuit to clean the metals. Heat recovery. Automatic manufacture systems. Cut process is planned.



TRANSPORT

Optimum packaging to reduce space in transport and save energy.



USE

Long lasting use. Spare parts and replacements available. Easy to clean and maintenance.



DISPOSAL

94,95% recyclable. Easy and quick to split PLEK components. Packages are reuse by our supplier to avoid waste generation. Carton used in packages is recyclable.

CERTIFICATES AND REFERENCES

The different programmes get points in different environmental categories to get the LEED certificate (sustainability, material and resources, water, energy and atmosphere, inner environment quality, innovation and design).



The mark of responsible forestry



PEFC Certificate



EN ISO 14006:2011
ECODESIGN Certificate



UNE-EN ISO 9001:2008
ISO 9001 Certificate



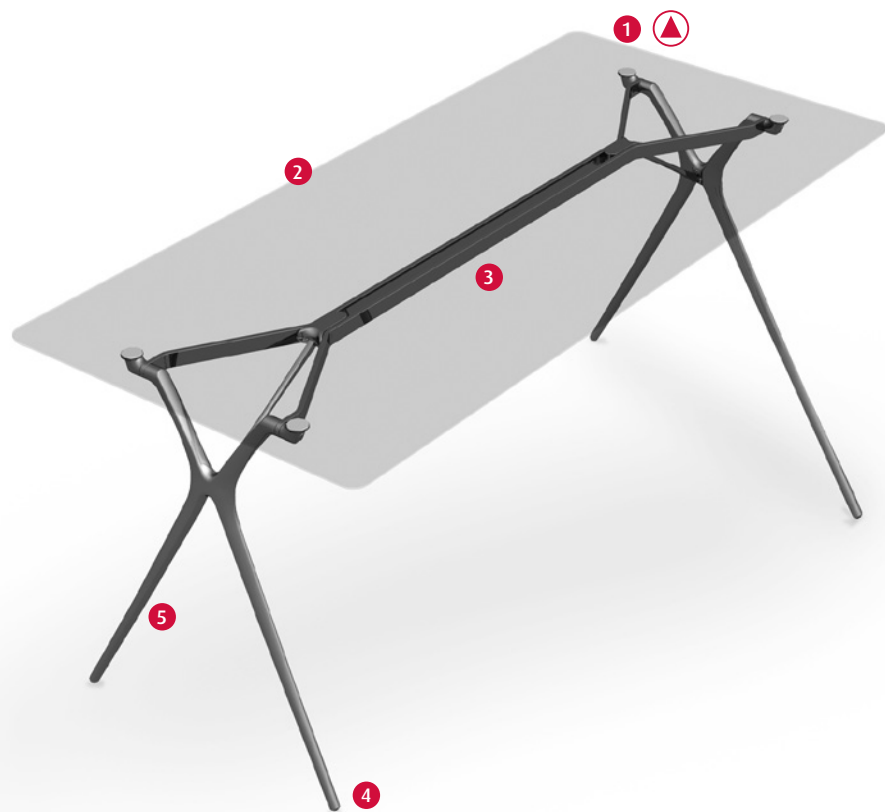
UNE-EN ISO 14001:2004
ISO 14001 Certificate



E1 by EN 13986 Certificate



ACTIU TECHNOLOGICAL PARK
project certified as LEED® GOLD
by U.S. Green Building Council 2011
Leadership in Energy & Environmental Design



- ① Supports ▲
- ② Top: glass finish
- ③ Extruded aluminium beam
- ④ Black polypropylene (P.P) caps
- ⑤ Moulded aluminium legs 21mm



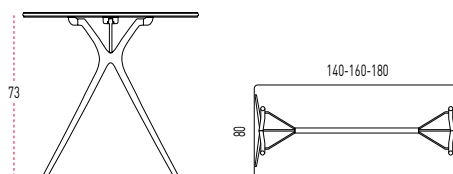
Fixed system detail

LEGS



Finishes: black, white, silver and polished

SIZES



DESCRIPTION

Frame:

Moulded aluminium **legs** 21 mm, available in silver, White, polished or black.

Extruded aluminium beam fixed to the legs with an aluminium piece (30 x 10 mm) **SEBS** supports to fix the table top.

Surface glass tops. Optional anodized aluminium modesty panel.

TOP FINISHES

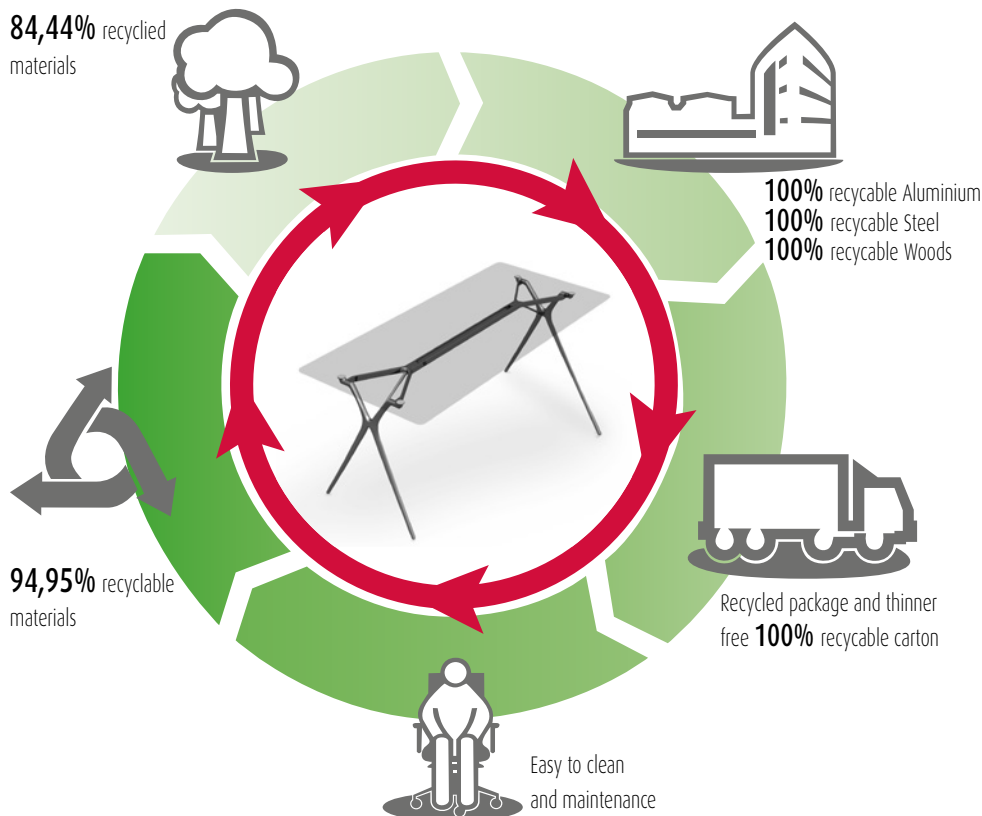
Glass (5+5 mm)



Clear White Blue

(see finishes and fabric card)

84,44% recycled materials



MATERIALS

PLEK has been designed to be manufactured with recycled materials 84,44%, danger substances such as chrome, mercury or cadmium are not used in big quantity. Recyclables Aluminium, Steel and Woods 100%. Organic volatile Components. Packages manufactured with recycled carton. Ink thinner free.



PRODUCTION

Energy use is optimized during the production process. Minimum environmental impact. Last generation technological system in coating processes. Painting that have not been used is recovered to use it again. Zero COVs emissions and other contaminant gas. Close water circuit to clean the metals. Heat recovery. Automatic manufacture systems. Cut process is planned.



TRANSPORT

Optimum packaging to reduce space in transport and save energy.



USE

Long lasting use. Spare parts and replacements available. Easy to clean and maintenance.



DISPOSAL

94,95% recyclable. Easy and quick to split PLEK components. Packages are reuse by our supplier to avoid waste generation. Carton used in packages is recyclable.

CERTIFICATES AND REFERENCES

The different programmes get points in different environmental categories to get the LEED certificate (sustainability, material and resources, water, energy and atmosphere, inner environment quality, innovation and design).



The mark of responsible forestry



PEFC Certificate



EN ISO 14006:2011
ECODESIGN Certificate



UNE-EN ISO 9001:2008
ISO 9001 Certificate



UNE-EN ISO 14001:2004
ISO 14001 Certificate



E1 by EN 13986 Certificate



ACTIU TECHNOLOGICAL PARK
project certified as LEED® GOLD
by U.S. Green Building Council 2011
Leadership in Energy & Environmental Design



DESCRIPTION

Frame:
Moulded aluminium **legs** 21 mm, available in silver, White, polished or black.

Extruded aluminium beam fixed to the legs with an aluminium piece (30 x 10 mm) SEBS supports to fix the table top.

MFC with **ABS** soft edging tops.

Optional anodized aluminium modesty panel.

- 1 Supports
- 2 Extruded aluminium beam
- 3 Top: MFC
- 4 Black polypropylene (PP) caps
- 5 Moulded aluminium legs 21 mm



LEGS



Finishes: black, white, silver and polished

TOP FINISHES

MFC (19 mm)

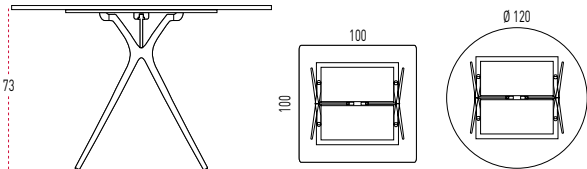
White

Maple

Elm

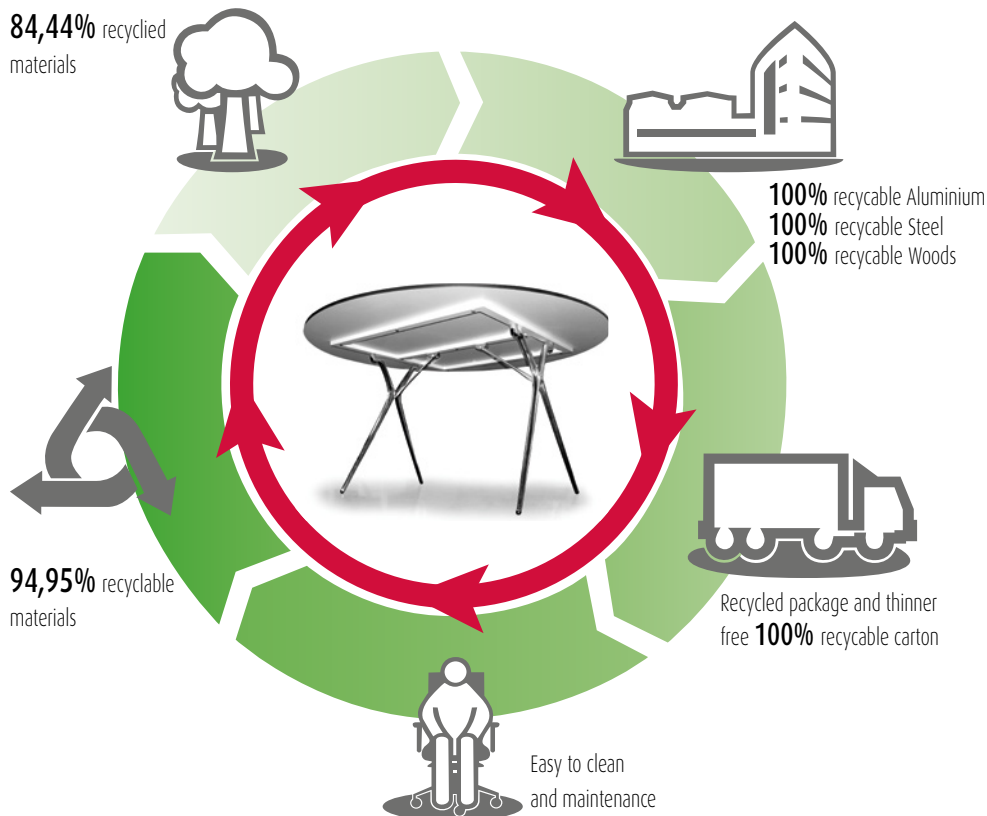
(see finishes and fabric card)

SIZES



FINISHES COMBINATIONS

LEGS	TOP FINISH	STEEL FRAME	MECHANISMS AND GUIDE
WHITE	White MFC	White	Silver
	Maple / Elm MFC	White	Silver
ALUMINIUM POLISHED	White MFC	White	Silver
	Maple / Elm MFC	Silver	Silver
SILVER	White MFC	White	Silver
	Maple / Elm MFC	Silver	Silver
BLACK	White MFC	White	Silver
	Maple / Elm MFC	Silver	Silver



MATERIALS

PLEK has been designed to be manufactured with recycled materials 84,44%, danger substances such as chrome, mercury or cadmium are not used in big quantity. Recyclables Aluminium, Steel and Woods 100%. Organic volatile Components. Packages manufactured with recycled carton. Ink thinner free.



PRODUCTION

Energy use is optimized during the production process. Minimum environmental impact. Last generation technological system in coating processes. Painting that have not been used is recovered to use it again. Zero COVs emissions and other contaminant gas. Close water circuit to clean the metals. Heat recovery. Automatic manufacture systems. Cut process is planned.



TRANSPORT

Optimum packaging to reduce space in transport and save energy.



USE

Long lasting use. Spare parts and replacements available. Easy to clean and maintenance.



DISPOSAL

94,95% recyclable. Easy and quick to split PLEK components. Packages are reuse by our supplier to avoid waste generation. Carton used in packages is recyclable.

CERTIFICATES AND REFERENCES

The different programmes get points in different environmental categories to get the LEED certificate (sustainability, material and resources, water, energy and atmosphere, inner environment quality, innovation and design).



The mark of responsible forestry



PEFC Certificate



EN ISO 14006:2011
ECODESIGN Certificate



UNE-EN ISO 9001:2008
ISO 9001 Certificate



UNE-EN ISO 14001:2004
ISO 14001 Certificate



E1 by EN 13986 Certificate



ACTIU TECHNOLOGICAL PARK
project certified as LEED® GOLD
by U.S. Green Building Council 2011
Leadership in Energy & Environmental Design

■ **ERGONOMICS**

PLEK available for all type of users. Perfect for any need and keep user's posture in a natural way without any manual adjustment.

■ **ECOLOGY**

ENERGY SAVING

The new technological production system included, reduce the energy resources used to manufacture each component. Materials are very well used to avoid wastes.

RECYCLED AND RECYCABLE MATERIALS

ACTIU environmental policy opts to use recycled materials in those components where functionality and lasting is not a condition. Materials used in PLEK such as Aluminium, Steel or Wood are totally recyclable.

SUSTAINABLE CERTIFICATE

ACTIU has **PEFC and FSC** certificate to proof that the wood used in our products comes from sustainable exploitations and **ECODESIGN ISO 14006 certificate**.

■ REMARKABLE VALUES

1 – Legs covered with epoxy coating, bonding 2nd generation polymerized 200°C. Non-greasy treatments and nano-ceramics application to improve the coating so it becomes more resistance and long-lasting.

2 – Coating 80-90 micron thickness (it could be different as per the project requirements)

This covering guarantees the finish and maintenance of metal structures.

3 – Painting process:

Actiu painting plant has minimum environmental impact against the traditional industry processes.

Treatment is done by polarized coating and compacted with temperature. We get homogeneous and regular application with 98% of painting and the remaining 2% is used to produce other paints. Paints used are COVs free (Volatile Organic Components) which are very dangerous for the environment. All water used in the process is re-used, so we get zero dump. The process is free in heavy metal, phosphate, organic components and DQD (Biochemical demand of Oxygen). The program gives us an exact control of thickness, so it provides us with standard thickness (80-90 micron). Antibacterial finish

4 – ACTIU has **PEFC and FSC** certificate to proof that the wood used in our products comes from sustainable exploitations and **ECODESIGN ISO 14006** certificate.

5 – A modesty panel could be added as an option in **fixed tables**.