

# METAL PEDESTALS



■ **Code:** FTB 1007 049

■ **Description:** Metal Pedestal and Cabinets

---

# METAL ACTIU

## EFFICIENT WORK SOLUTIONS



Pedestals designed for a dairy and personal use. Classification system by using drawers and filing frames easy to access and totally opened



## ■ GENERALES FEATURES METAL PEDESTALS AND FILING SYSTEM

		GENERALES FEATURES
STRUCTURAL FEATURES	Material	Steel sheet 0,8 mm thickness
	Structure	One structure only without joints
	Drawer	Totally accessible. Steel sheet 0,8 mm thickness
	Filing Drawer	Steel sheet bottom drawer 0,8 mm thickness
	Locking system. Security	Integrated anti-tilt system. System to <u>avoid opening more than two drawers at the same time</u>
	Interchangeble locking	Security locker. Open-close position. Unique key available
	Castors	Anti-skid castors with locker in front castors ( Ø=65 mm). Only available in mobile pedestals
	5th castor for filing drawer	Better stability and functionality. Available in Mobile pedestals only. Fixed pedestals not necessary
	Soundproofing and soft movements	Polyamide locking bar. Silent movements. Rubber runner-stop
	Runners models	Runners totally extracted
	Runners	Steel telescopic balls bearing slides.Maximum length. Pre-galvanized, layer passivization, electrolytic to salt resistance
COMPLEMENTARY FEATURES	Handles	Ergonomy. Several options: metallic or thermoplastic, standard or fitted inside the surface
	Book stands for shelves	Optional. Metal sheet
	Pencil tray	Optional. High resistance thermoplastic material
	Tops	Materials and thickness depending on the complements. (16 mm thickness MFC tops for Mobile pedestals) MFC de 16, 19, 25 o 30 mm, HPL 25 mm or C.Laminate 13 mm thickness
	Front drawers	Steel front thickness 0,8 mm or front agglomerated wood particles thickness 16 mm with synthetic resin average density = 660-635 Kg/m <sup>3</sup> and ABS edge thickness = 2 mm
LAYERS FEATURES	Coating	Electrostatic coat epoxi-polyester - bonding 2nd generation polymerized 200 °C. Degreasing treatment and nanoceramic application anticorrosion (improvements about 300% in resistance and adherence). No-fingersprint effect
	Coating thikness (UNE EN ISO 2808:00)	Coating thickness = 90 µm
	Adherence in a cross cut (EN ISO 2409:96)	Surfaces not affected. Not loosings. 5 grades valuation
	Surface finish	Silk texture. Matt finish
	Layer hardness (PERSOZ) (UNE EN ISO 1522:07)	D > 220, not penetration in the substrate
	Impact resistance (UNE EN ISO 6272)	R (12,5 mm) = 50; Not cracks, not remove from the support
	Anti-corrosive resistance. Salt spray fog (EN ISO 7253)	Essay resistance (R) 500 hours ≤ R ≤ 750 hours
	Thermical resistance. Warm-cold cycles (UNE 48025)	Not apparent variation. 5 grades valuation.
	Humidity resistance (UNE EN ISO 9227:07)	Achieved. Not bright losing or bubbles
	Light resistance (UNE EN ISO 11341)	Excelent. No cracks neither bubbles. Protected properties remain the same
	Resistance to chemical products for domestic use without thinner (UNE 48027:80)	Grade 5. Good resistance to acids, alcalys, oils in room temperature
	Stain resistance (UNE 48027:80)	Not visible fault
	Maintenance	Easy to maintenance and clean. Recommended to use PH neutral products
	Anti-bacterium layer	Optional protection for Health, children education, food laboratories requirements

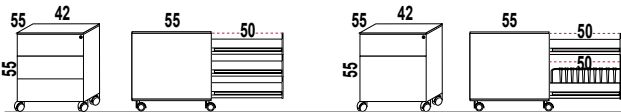


■ FEATURES

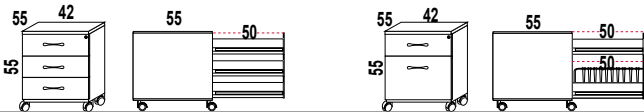
- 1 Steel sheet, 0,8 mm thickness
- 2 Electrostatic coat; thickness 90µm
- 3 Anti-footprints treatment
- 4 Silk texture
- 5 Antioxidant protection
- 6 Anti-tilt mechanism system
- 7 Single exterior frame without joints
- 8 Open-close position lock
- 9 Drawer blocked system for transport
- 10 Drawers and filing drawer with total extraction
- 11 Silent movements. Rubber runner-stop
- 12 Polyamide lateral locking bar
- 13 Anti-skid castors. Front castors lockable
- 14 5th castor for filing drawer to give more stability and functionality
- 15 Personalized colours
- 16 Optional pencil trays and dividers
- 17 Optional laminated security glass top PVB 5+5 mm thickness
- 18 Product available all manufactured by steel 0,8 mm thickness or with MFC drawer fronts and top 16 mm in different finishes

■ MOBILE METAL PEDESTALS WITH TELESCOPIC RUNNERS. COMPLETE EXTRACTION OF THE DRAWER

ALL METAL



METAL CARCASS - MFC TOP AN FRONT



■ FINISHES

ALL METAL - 1 COLOUR (STEEL SHEET 0,8 mm)



ALL METAL - 2 COLOURS (STEEL SHEET 0,8 mm)

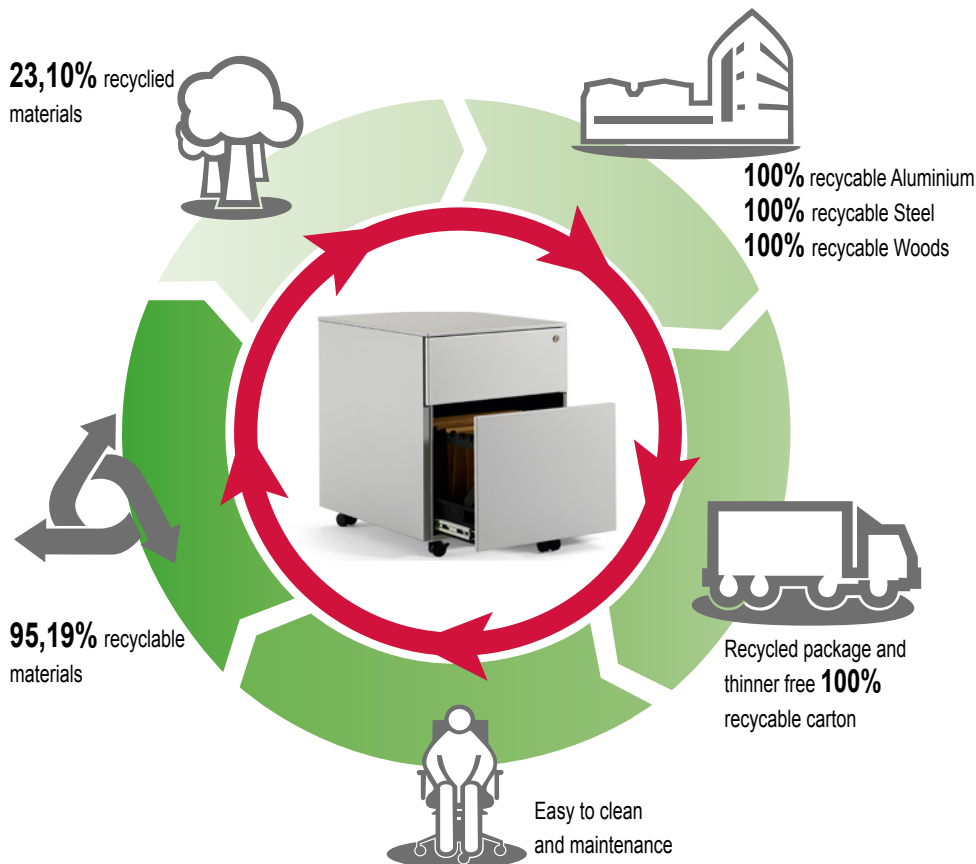


Drawers with metal frame



0,8 mm STEEL SHEET STRUCTURE - 16mm MFC TOP AND FRONT (see finishes card)





## MATERIALS

**MOBILE PEDESTAL** has been designed to be manufactured with recycled materials **23,10%**, danger substances such as chrome, mercury or cadmio are not used in big quantity. Recyclable Aluminium, Steel or Woods 100%. Organic volatile Components. Packages manufactured with recycled carton. Ink thinner free.



## PRODUCTION

Energy use is optimized during the production process. Minimum environmental impact. Last generation technological system in coating processes. Painting that have not been used is recovered to use it again. Zero COVs emissions and other contaminant gas. Close water circuit to clean the metals. Heat recovery. Automatic manufacture systems. Cut process is planned.



## TRANSPORT

Optimum packaging to reduce space in transport and save energy.



## USE

Long lasting use. Spare parts and replacements available. Easy to clean and maintenance.



## DISPOSAL

**95,19% recyclable.** Easy and quick to split **MOBILE PEDESTAL** components. Packages are reuse by our supplier to avoid waste generation. Carton used in packages is recyclable.

## CERTIFICATES AND REFERENCES

The different programmes get points in different environmental categories to get the LEED certificate (sustainability, material and resources, water, energy and atmosphere, inner environment quality, innovation and design).



The mark of responsible forestry



PEFC Certificate



ECODESIGN Certificate



ISO 9001 Certificate



ISO 14001 Certificate



E1 by EN 13986 Certificate



**ACTIU TECHNOLOGICAL PARK** project certified as **LEED® GOLD** by U.S. Green Building Council 2011  
Leadership in Energy & Environmental Design





### ■ FEATURES

- 1 Steel sheet, 0,7 mm thickness
- 2 Electrostatic coat; thickness 90µm
- 3 Fine textured finish
- 4 Antioxidant protection
- 5 Anti-tilt mechanism system
- 6 Single exterior frame without joints
- 7 Open-close position lock
- 8 Drawer blocked system for transport
- 9 Drawers and filing drawer with total extraction - Black Finish
- 10 Silent movements. Rubber runner-stop
- 11 Polyamide lateral locking bar
- 12 Anti-skid castors. Front castors lockable
- 13 5th castor for filing drawer to give more stability and functionality
- 14 Pencil trays and dividers

### ■ FINISHES

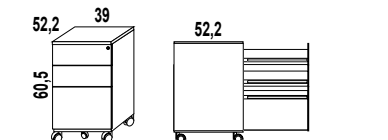
ALL METAL - 1 COLOUR (STEEL SHEET 0,7 mm)



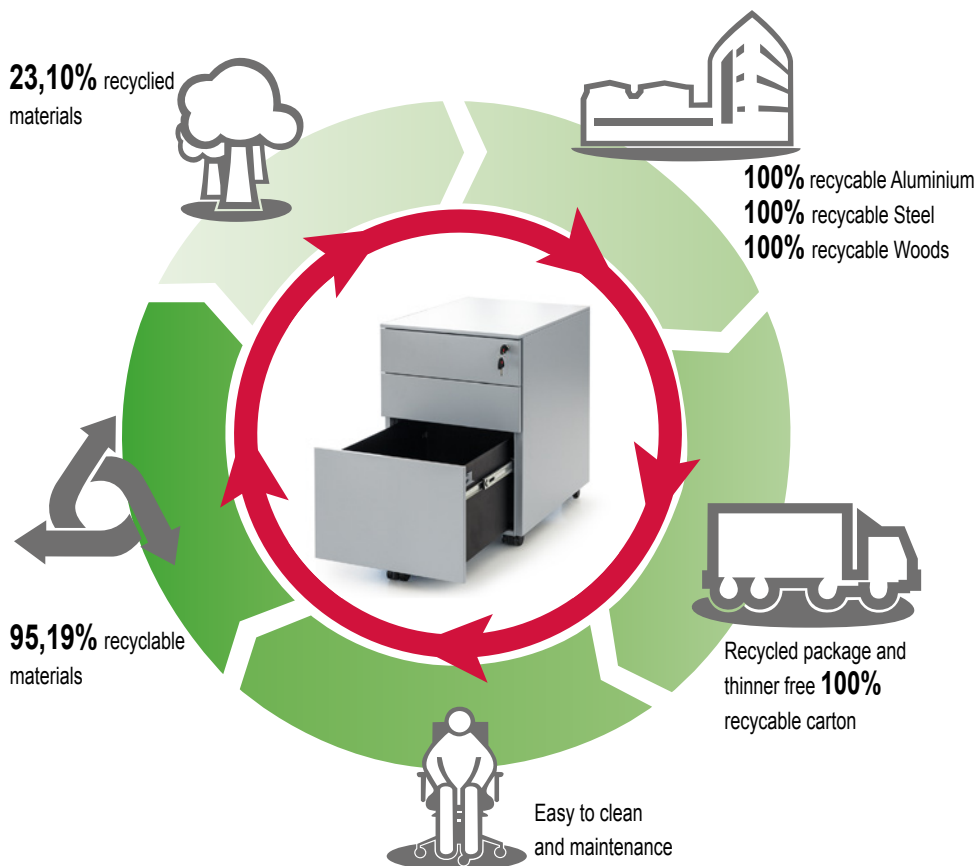
White



Grey



ALL METAL



## MATERIALS

**MOBILE PEDESTAL** has been designed to be manufactured with recycled materials **23,10%**, danger substances such as chrome, mercury or cadmio are not used in big quantity. Recycable Aluminium, Steel or Woods 100%. Organic volatile Components. Packages manufactured with recycled carton. Ink thinner free.



## PRODUCTION

Energy use is optimized during the production process. Minimum environmental impact. Last generation technological system in coating processes. Painting that have not been used is recovered to use it again. Zero COVs emissions and other contaminant gas. Close water circuit to clean the metals. Heat recovery. Automatic manufacture systems. Cut process is planned.



## TRANSPORT

Optimum packaging to reduce space in transport and save energy.



## USE

Long lasting use. Spare parts and replacements available. Easy to clean and maintenance.



## DISPOSAL

**95,19% recycable.** Easy and quick to split **MOBILE PEDESTAL** components. Packages are reuse by our supplier to avoid waste generation. Carton used in packages is recycable.

## CERTIFICATES AND REFERENCES

The different programmes get points in different environmental categories to get the LEED certificate (sustainability, material and resources, water, energy and atmosphere, inner environment quality, innovation and design).



The mark of responsible forestry



PEFC Certificate



ECODESIGN Certificate



ISO 9001 Certificate



ISO 14001 Certificate



E1 by EN 13986 Certificate



ACTIU TECHNOLOGICAL PARK project certified as LEED® GOLD by U.S. Green Building Council 2011 Leadership in Energy & Environmental Design



### ■ FEATURES

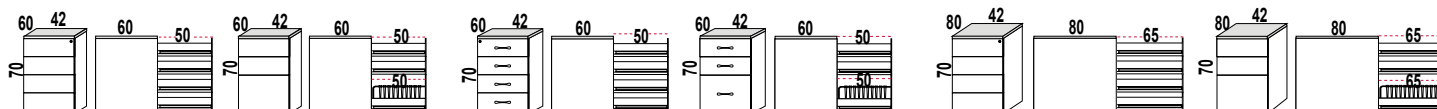
- 1 Steel sheet 0,8 mm thickness
- 2 Electrostatic coat; thickness 90µm
- 3 Anti-footprints treatment
- 4 Silk texture
- 5 Antioxidant protection
- 6 Anti-tilt mechanism system
- 7 Single exterior frame without joints
- 8 Open-close position lock
- 9 Drawer blocked system
- 10 Drawers and filing drawer with total extraction
- 11 Silent movements. Rubber runner-stop.
- 12 Polyamide lateral locking bar
- 13 4 inner levelers. Easy access. Distance up to +20 mm
- 14 Optional pencil trays and dividers
- 15 Product available all manufactured by steel 0,8 mm thickness or with MFC drawer fronts and top 16 mm in different finishes

### ■ DESK HEIGHT PEDESTALS WITH RUNNERS. COMPLETE EXTRACTION OF THE DRAWER

DEPTH 60 cm  
ALL METAL (WITHOUT TOP)

DEPTH 60 cm  
METAL CARCASS - MFC FRONT (WITHOUT TOP)

DEPTH 80 cm  
ALL METAL (WITHOUT TOP)



### ■ FINISHES

ALL METAL - 1 COLOUR (STEEL SHEET 0,8 mm)



White

Silver

0,8mm STEEL SHEET STRUCTURE - 16 mm MFC TOP AND FRONT



White/ White

White/ Maple

White/ Light oak

White/ Elm

White/ Walnut

White/Wengue

White/ Chestnut



Silver/White

Silver/ Maple

Silver/ Light oak

Silver/ Elm

Silver/ Walnut

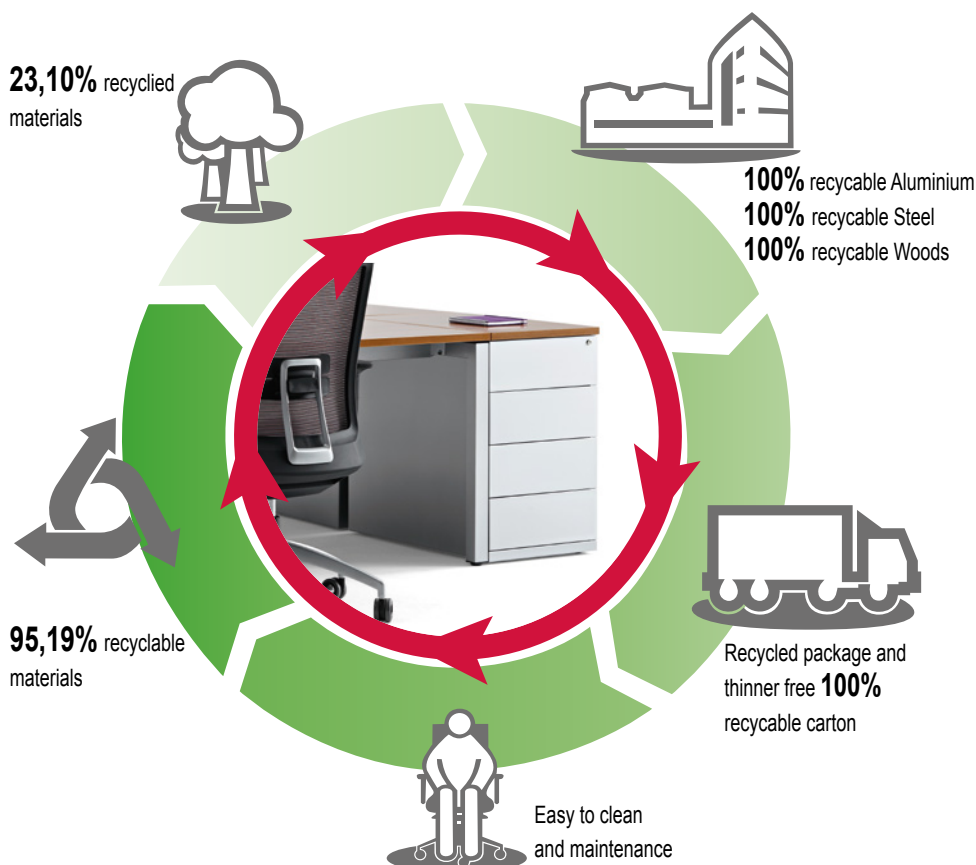
Silver/ Wengue

Silver/Chestnut

(see finishes card)







## MATERIALS

**MOBILE PEDESTAL** has been designed to be manufactured with recycled materials **23,10%**, danger substances such as chrome, mercury or cadmio are not used in big quantity. Recyclable Aluminium, Steel or Woods 100%. Organic volatile Components. Packages manufactured with recycled carton. Ink thinner free.



## PRODUCTION

Energy use is optimized during the production process. Minimum environmental impact. Last generation technological system in coating processes. Painting that have not been used is recovered to use it again. Zero COVs emissions and other contaminant gas. Close water circuit to clean the metals. Heat recovery. Automatic manufacture systems. Cut process is planned.



## TRANSPORT

Optimum packaging to reduce space in transport and save energy.



## USE

Long lasting use. Spare parts and replacements available. Easy to clean and maintenance.



## DISPOSAL

**95,19%** recyclable. Easy and quick to split **MOBILE PEDESTAL** components. Packages are reuse by our supplier to avoid waste generation. Carton used in packages is recyclable.

## CERTIFICATES AND REFERENCES

The different programmes get points in different environmental categories to get the LEED certificate (sustainability, material and resources, water, energy and atmosphere, inner environment quality, innovation and design).



The mark of responsible forestry



PEFC Certificate



ECODESIGN Certificate



ISO 9001 Certificate



ISO 14001 Certificate



E1 by EN 13986 Certificate



ACTIU TECHNOLOGICAL PARK  
project certified as LEED® GOLD  
by U.S. Green Building Council 2011  
Leadership in Energy & Environmental Design



### ■ FEATURES

- 1 Steel sheet, 0,8 mm thickness
- 2 Electrostatic coat; thickness 90µm
- 3 Anti-footprints treatment
- 4 Silk texture
- 5 Antioxidant protection
- 6 Anti-tilt mechanism system
- 7 Single exterior frame without joints
- 8 Open-close position lock.
- 9 Drawer blocked system
- 10 Drawers and filing drawer with total extraction
- 11 Silent movements. Rubber runner-stop.
- 12 Polyamide lateral locking bar
- 13 4 inner levelers. Easy access. Distance up to +20 mm
- 14 Optional dividers
- 15 Personalized colours
- 16 Moulded thermoplastic handles, integrated in the fronts

### ■ VERTICAL FILING CABINETS WITH TELESCOPIC RUNNERS.COMPLET E EXTRACTION OF THE DRAWER

#### ALL METALLIC (STEEL SHEET 0,8 mm)



### ■ FINISHES

#### ALL METAL - 1 COLOUR (STEEL SHEET 0,8 mm)



White

Silver

#### ALL METAL - 2 COLOURS (STEEL SHEET 0,8 mm)

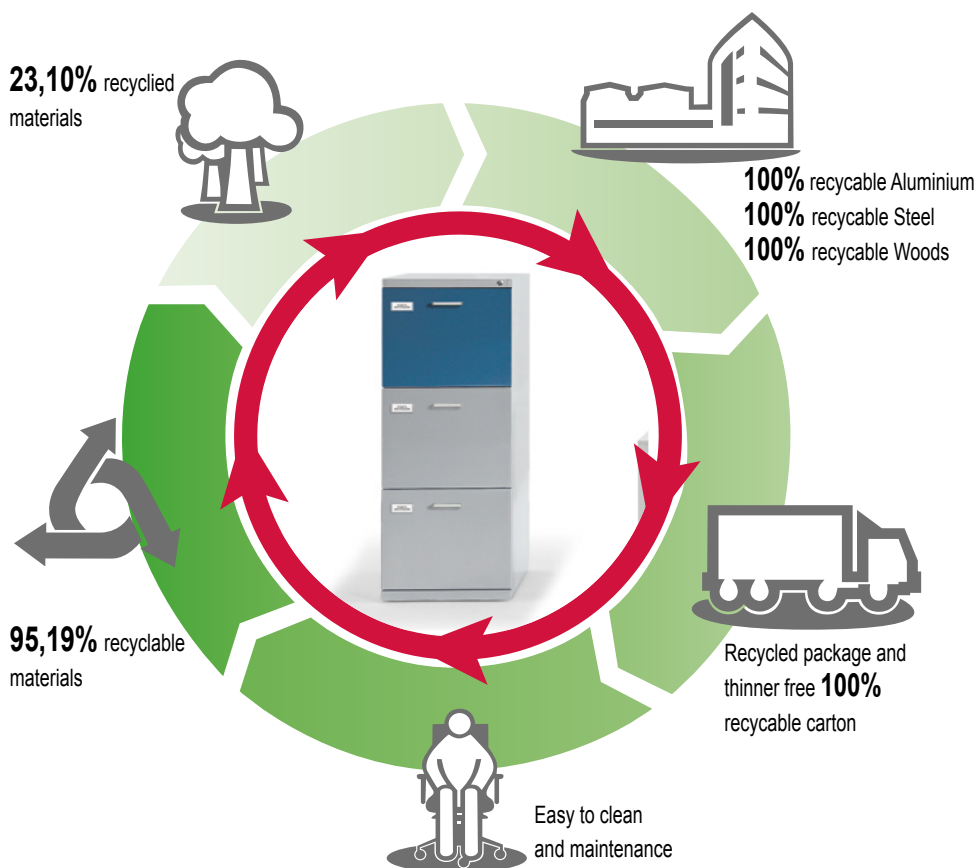


White/Pistache

White/Orange

White/Blue

(see finishes card)



## MATERIALS

**MOBILE PEDESTAL** has been designed to be manufactured with recycled materials **23,10%**, danger substances such as chrome, mercury or cadmio are not used in big quantity. Recyclable Aluminium, Steel or Woods 100%. Organic volatile Components. Packages manufactured with recycled carton. Ink thinner free.



## PRODUCTION

Energy use is optimized during the production process. Minimum environmental impact. Last generation technological system in coating processes. Painting that have not been used is recovered to use it again. Zero COVs emissions and other contaminant gas. Close water circuit to clean the metals. Heat recovery. Automatic manufacture systems. Cut process is planned.



## TRANSPORT

Optimum packaging to reduce space in transport and save energy.



## USE

Long lasting use. Spare parts and replacements available. Easy to clean and maintenance.



## DISPOSAL

**95,19%** recyclable. Easy and quick to split **MOBILE PEDESTAL** components. Packages are reuse by our supplier to avoid waste generation. Carton used in packages is recyclable.

## CERTIFICATES AND REFERENCES

The different programmes get points in different environmental categories to get the LEED certificate (sustainability, material and resources, water, energy and atmosphere, inner environment quality, innovation and design).



The mark of responsible forestry



PEFC Certificate



ECODESIGN Certificate



ISO 9001 Certificate



ISO 14001 Certificate



E1 by EN 13986 Certificate



ACTIU TECHNOLOGICAL PARK project certified as LEED® GOLD by U.S. Green Building Council 2011 Leadership in Energy & Environmental Design

### ■ STANDARDS

**METAL PEDESTALS** have passed all test done in our technological laboratory as well as the essays done in (AIDIMA) Furniture Technological Institute:

**UNE EN ISO 14073.** Office Furniture. Furniture Storage.

- **UNE-CEN/TR 14073-1:2005 IN.** Office Furniture. Furniture Storage. Part 1: Dimensions.

- **UNE-EN 14073-2:2005.** Office Furniture. Archive furniture. Part 2: Mechanical security requirements.

- **UNE-EN 14074:2005.** Office furniture. Office Desks and filing furniture. Essays to determine the resistance and lasting of the mobile parts.

### ■ ACCESSIBILITY

Comfortable and Open. We design furniture to solve all needs at any moment and perfectly integrated in any nowadays working spaces: more agile and comfortable, efficient and multipurpose.

These modules split working spaces providing confidentiality and privacy. An easy filing and storing solution for daily accessibility.

### ■ MOBILITY

Actiu Mobile pedestals are polyvalent modules to optimize and get an easier personal and daily filing. A practical filing system.

### ■ ECOLOGY

#### ENERGY SAVING

The new technological production system included, reduce the energy resources used to manufacture each component. Materials are very well used to avoid wastes.

#### RECYCLED AND RECYCABLE MATERIALS

ACTIU environmental policy opts to use recycled materials in those components where functionality and lasting is not a condition. Materials used in METAL PEDESTALS such as Aluminium, Steel and Woods sare totally recyclable.

## ■ REMARKABLE VALUES

**1** - Legs covered with epoxy coating, bonding 2nd generation polymerized 200°C. Non-greasy treatments and nano-ceramics application to improve the coating so it becomes more resistance and long-lasting.

**2** - Coating 80-90 micron thickness (it could be different as per the project requirements)

This covering guarantees the finish and maintenance of metal structures.

Antibacterial finish (Optional).

### **3 - Painting process:**

Actiu painting plant has minimum environmental impact against the traditional industry processes.

Treatment is done by polarized coating and compacted with temperature.

We get homogeneous and regular application with 98% of painting and the remaining 2% is used to produce other paints. Paints used are COVs free (Volatile Organic Components) which are very dangerous for the environment.

All water used in the process is re-used, so we get zero dump.

The process is free in heavy metal, phosphate, organic components and DQD (Biochemical demand of Oxygen).

The necessary hydrogen to cut the metal is generated in the cutting plant just before use it:

Important energy saving

We do not transport or store gas.

**4** - Integrated solutions to adapt optional elements, castors, tops, shelves, dividers...

**5** - ACTIU has **PEFC and FSC**, certificate to proof that the wood used in our products comes from sustainable exploitations and **ECODESIGN ISO 14006 certificate**.